

All in one, one for all.

Next level first aid stations. Spectra ensures you have everything you need to meet your regulatory requirements.



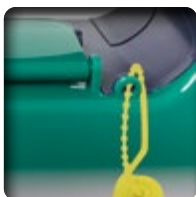
Clear identification of use and instruction.



Aura3 boxes are 100% recycled and 100% recyclable.



Each panel clips together.



Each kit is tamper sealed.



Compliance in one station, in one place.

EVERYTHING YOU NEED Each panel contains useful product information, a primary kit, designed for your first aid needs, and supplementary products to enhance the practicality of the panel.

MODULAR Ensures you have everything you need to meet your regulatory requirements in one simple modular solution. Provides neat, heavy-duty storage and easy recognition of product.

* Excludes product, packaging and spectra back panel.



+44 (0) 08456 448808 | sales@reliancemedical.co.uk | www.reliancemedical.co.uk

RELIANCE MEDICAL
'Leading First Aid'

What does the law say?

The Health and Safety (First Aid) regulations 1981 states:

“An employer shall provide or ensure that there are provided such equipment and facilities as are adequate and appropriate in the circumstances for enabling first aid to be rendered to his employees if they are injured or become ill at work”

Spectra™ offers a convenient and compliant solution for your workplace. Available in four options, providing quick and comprehensive access to first aid.



First Aid guidance is provided in an illustrated format to assist in relevant first aid measures.



First aid kits are supplied complete with a security seal, so Health & Safety Managers can easily monitor first aid usage.

The security seal can easily be broken by hand in the case of an emergency and, visibly indicates that components of the kit may be missing if it has been removed.



Accident Books are conveniently stored to remind first responders of their regulatory requirement to record workplace accidents at the point of an incident.



Pilfer proof dispenser stock is secured by means of fixed wallets which are removed and refilled in seconds using a quick-lock mechanism and a unique key.



SPECTRA FIRST AID SYSTEM



9100 WORKPLACE FIRST AID SYSTEM
with Pilfer Proof Plaster Dispenser
SIZE: 75cmH x 34.7cmW x 10.5cmD
UNIT: 1
MOQ: 1



9102 EYE WASH FIRST AID SYSTEM
SIZE: 75cmH x 34.7cmW x 10.5cmD
UNIT: 1
MOQ: 1



9104 BURNS FIRST AID SYSTEM
SIZE: 75cmH x 34.7cmW x 10.5cmD
UNIT: 1
MOQ: 1



9105 AED SYSTEM
Mediana A15
SIZE: 75cmH x 34.7cmW x 10.5cmD
UNIT: 1
MOQ: 1

CONTENTS	9100	9102	9104	9105
Accident Book	✓	✓	✓	✓
System Guidance Sign	✓	✓	✓	✓
Medium BS8599-1 Kit	✓			
Pilfer Proof Dispenser	✓			
Pilfer Proof Fabric Plasters	✓			
Pilfer Proof Washproof Plasters	✓			
Double Eye Wash Station		✓		
Eye Pod Station		✓		
Burn Dressings Kit			✓	
Burns Plasters Kit			✓	
Mediana A15 AED				✓
AED Prep Kit				✓



When you see this symbol with our products, you are guaranteed we have reduced plastic in the mould, used 100% recycled materials, 100% recyclable product.



+44 (0) 08456 448808 | sales@reliancemedical.co.uk | www.reliancemedical.co.uk

RELIANCE MEDICAL
'Leading First Aid'

